

## **Historic, Archive Document**

Do not assume content reflects current scientific knowledge, policies, or practices.



62,81

LIBRARY  
RECEIVED  
★ JAN 27 1954 ★  
U. S. Department of Agriculture

FALL - 1953  
SPRING - 1954  
WHOLESALE CATALOG

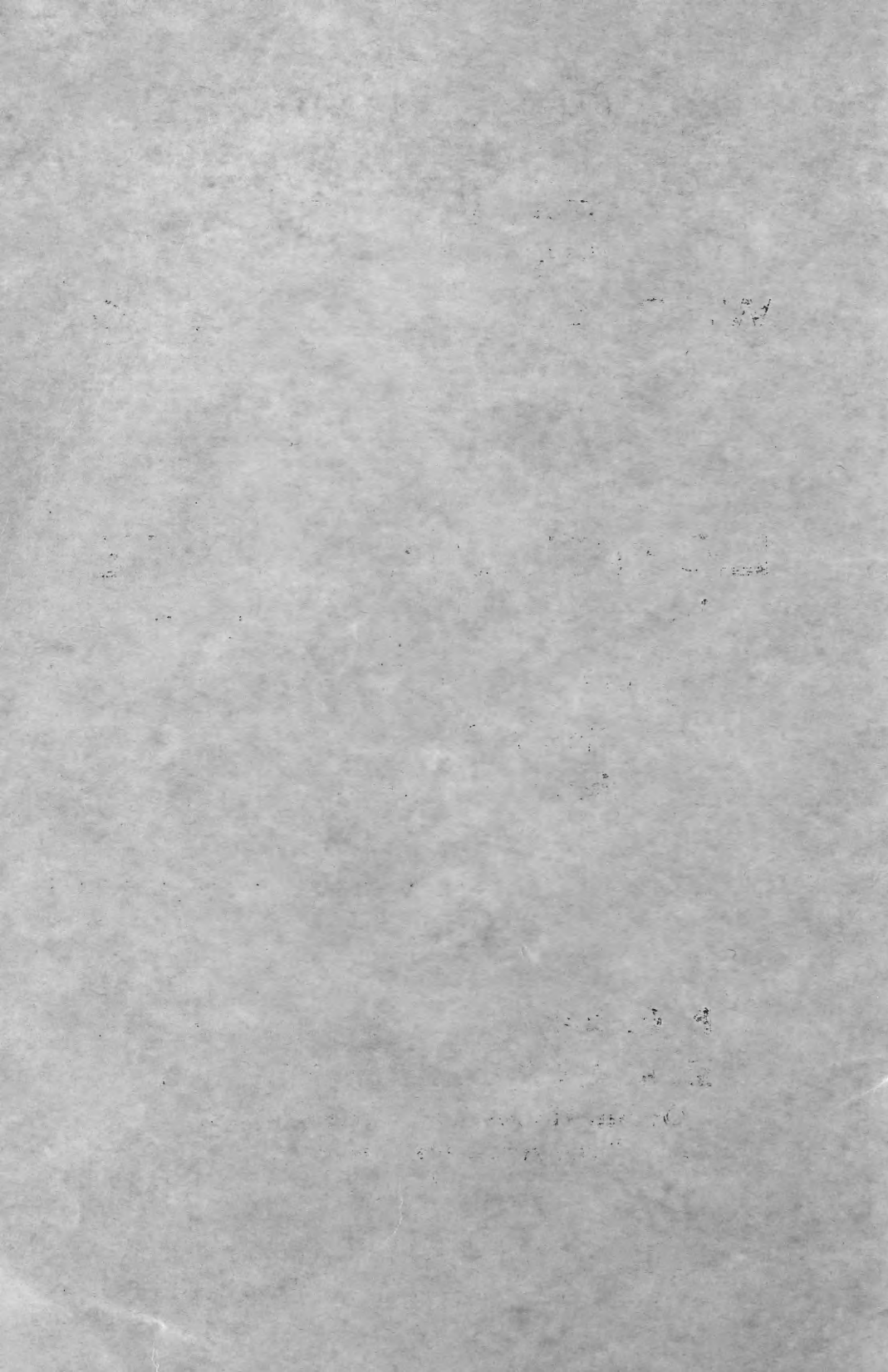
•••

**LOWELL H. MCGEE  
NURSERIES**

**TREES, VINES, SHRUBS,  
HEDGE PLANTS, And  
Miscellaneous Nursery Stock**

••

**P. O. Box 341 - Phone 654-R  
McMINNVILLE, TENNESSEE**  
On State Highway 56, ( Beersheba Road )  
" Just Across The New Bridge "



# LOWELL H. MCGEE NURSERY McMINNVILLE, TENNESSEE

Another season is history and for us has been well up to expectations. Some nice big orders, some average orders, and many smaller orders. All this adds up to typical American business where it is everybody's privilege to buy what you want, when you want it and from whom you wish to buy. It has been our aim to give you as much for your dollars as possible. To say that we have pleased everybody 100% would be a false statement. But the small fraction of a percentage on complaints is proof to us that our sincere efforts have been well spent.

Now to begin another season we are placing in your hands the best assortment with the best quotations we are able to make. Possibly others will quote for less. Many will quote for more. But all we can ask that you take into consideration that we are continually making every effort to improve quality, service, and satisfaction to our customer in every way possible. Every consideration is given the quantity buyer along with most reasonable prices to those who wish smaller quantities. If you feel that we can be of service you are cordially invited to go along with us. Buy your needs as far as you can and if we are not right in every way do not pull your punches.

To those with whom we have dealt and are acquainted either personally or through many years of correspondence we extend our sincere thanks. You have helped us greatly with your continued business. It is a pleasure to look forward to hearing from you again this season. To those who have just sent their first orders last season; we consider you our best prospects for another year. If for any reason you have been displeased, write us so that we can get tuned up for your early orders. New customers are asked to investigate us in any way or visit us at any time.

Our location in the corporate limits of McMinnville is on State Highway 56, "just across the bridge" and packing is done at this place for all shipments. Growing fields are in various sections most suited to varieties throughout the McMinnville area. Some of our stock is grown under contract by the most expert growers in this area, and under direct supervision of the owners of Lowell H. McGee Nurseries.

Let us hear from you and you will surely hear from us.

The owners of the Lowell H. McGee Nurseries have spent a lifetime serving the wholesale trade.

Write for detailed information concerning your needs we are never too busy to answer promptly.

All orders are acknowledged and given prompt attention.

When possible send your orders well ahead of desired shipping time. This helps us to serve you better.

We are often able to supply native Tree and Shrub Seeds, Hardwood Cuttings etc. Want lists are appreciated.

Order what you need, none too small, none too large.

Truck and Railcar lots are given special attention and packed free. We welcome new customers, give us that trial order today.

Experienced help in our packing department and the use of only the best of materials, insure bales that will get to you in good shape.

# GENERAL INFORMATION

**Terms:**—2% discount and free packing when cash IN FULL is sent with order. C.O.D. shipments will be made when at least 25% of total order is sent and packing will be charged at cost of material used. Established accounts, 2% discount ten days or 30 days net with packing charges made at cost. To become an established account, please furnish references well in advance of shipping date allowing time to investigate. Telephone or Telegraph orders must be confirmed by mail except from established accounts.

**Conditions of Sale:**—All quotations in this list, or special quotations made, are subject to change, supply being exhausted, or any shortage beyond our control and we reserve the right to refund all or any part of your payment.

We use every precaution to supply only true-to-name stock and will replace upon proper proof any stock that may prove otherwise, but at no time do we assume responsibility for more than original purchase price.

**Claims:**—for errors, shortages, or anything that we could be held responsible for must be made in writing within ten days after receipt of stock. Stock damaged in transit by delays or neglect of carrier must be made to them and our responsibility for such ends when receipted by carriers. Our assistance will be gladly given to establish such claims.

Please state mode of shipment if possible, otherwise we will use our best judgment, assuming no responsibility. If Parcel Post shipments are wanted please include 50% of the amount of your order for postage and extra packing expenses. If overpaid we will refund, or if not sufficient we will invoice you. Truck service available at reasonable rates, direct to your storage or job. Our grading is liberal and we only ask the usual standard tolerance.

A certificate of inspection will accompany all shipments.

**REFERENCE:**—First National Bank and The City Bank & Trust Co., of McMinnville; The Commercial Agencies; and many trade references which we will be glad to name at your request.

## CLASSIFICATIONS AND ABBREVIATIONS:

S. denotes seedlings, 1 or more years old, cultivated in open field rows. For the most part in virgin soil or "new Ground".

C. Propagated from 8 to 9 in. hardwood cuttings in open field rows and may be either 1 or 2 years.

Tr. Transplanted one or more times and field grown unless specified.

Div. Divisions or suckers from mature stock with roots sufficient for liners.

Branched. Stock listed as branched will be graded as finished stock and graded to Nursery Standards in number of canes, caliper, roots, etc., except when specified number of canes are given such as Privets, Hedge quality Spirea, etc.,

Stock listed as Seedlings, Cuttings, Divisions etc. and not specified as BRANCHED will be graded to LINING OUT STOCK standards.

SELECTED WHIPS in trees are graded as LINING OUT STOCK of a better quality to give quick results. Some may be lightly branched.

## SHRUBS AND HEDGE PLANTS

Seedlings, Cuttings and Divisions are tied in bundles of 50.  
Branched stock tied in bundles of 10.

Hedge Plants tied in bundles of 25 except lining out grades.  
If you have read this carefully and make your orders accordingly you will not be disappointed with the stock you will get from us.

Thirty years experience in packing Nursery Stock for shipment to all parts of the U. S. and Canada has taught us to adequately pack all orders to reach our customers in good prime condition. Many letters in our files attest to the fact that our packing is as good as the best.

From Canada Spring 1953,

Would just like to say how nice the plants were and how well packed. Was really pleased with the quality. (Name on request)

# HARDY DECIDUOUS SHRUBS & HEDGE PLANTS

One of our strongest bids for your business is our list of shrubs. We offer you variety in standard NURSERY GROWN STOCK and in addition quite a few native collected shrubs in varieties not easily obtained as Nursery grown. Stock specified in our descriptions as "NATIVE COLLECTED STOCK" will be graded as near to nursery standards as possible to obtain. Grades listed in this catalog are presently available in quantities to offer to the general trade and if other sizes are required, please write us. We often have other sizes in limited quantities that would not justify a general listing.

### ALMONDS, (PRUNUS GLANDULOSA) Double Pink

	per 10	per 100	per 1,000
6 to 12 in. Div. ....	1.00	8.00	65.00
12 to 18 in. Tr. ....	2.00	15.00	
12 to 18 in. Br. ....	2.50	20.00	
18 to 24 in. Br. ....	3.00	25.00	
2 to 3 ft. Br. ....	4.00	35.00	
3 to 4 ft. Br. ....	5.00	45.00	

The above listed Almonds are all own root shrubs and preferred to those grafted or budded on peach or plum roots.

### ALTHEA (HIBISCUS) SYRIACUS Shrub Althea, Single flowering; mixed colors.

Color range usually runs from white to red with many bi-color flowers. Very attractive for shrub borders, informal hedges and plantings that require several plants at little cost. Also used to graft varieties that do not thrive on own roots.

6 to 12 in. S. ....	1.00	8.00
12 to 18 in. S. ....	1.50	12.00
18 to 24 in. S. ....	2.50	20.00
Grafting size selected quality .....	3.50	30.00

**We are not in the Beetle Zone.**

SHRUBS AND HEDGE PLANTS  
Continued

**ALTHEA, (HIBISCUS SYRIACUS) Shrub Althea, Double Flowers; named colors.**

For those who prefer doubleflowering varieties and selected colors we offer; VARIETIES

**AMPLISSIMA, Double Red**

**ANEMONAEFLORA, Double Pink**

**JEANNE d'ARC, Double White**

	per 10	per 100	per 1,000
6 to 12 in. C. ....		3.50	30.00
12 to 18 in. C. ....		4.50	40.00
18 to 24 in. C. ....	.75	6.00	50.00

**ARDENS, Double Lavender**

Same cutting grades and prices as double varieties; also

12 to 18 in Br. ....	1.25	10.00
18 to 24 in. Br. ....	2.00	15.00
2 to 3 ft. Br. ....	2.50	20.00

**AMORPHA FRUTICOSA, False Indigo**

A good foliage plant with purple summer flowers Grows under almost any conditions and is appreciated by those who are acquainted.

6 to 12 in. S. ....	3.00	25.00
12 to 18 in. S. ....	4.00	45.00
18 to 24 in. S. ....	5.00	45.00

**ARALIA SPINOSA, Devil's Walkingstick**

A very spiny tall shrub or almost a small tree. Produces masses of white flowers followed by black berries in early Fall. Sometimes used as a barrier or hedge and when properly planted is almost impenetrable.( native collected stock)

12 to 18 in. S. ....	.75	6.00
18 to 24 in. S. ....	1.00	8.00
5 to 6 ft. whips ....	6.50	50.00

**ARONIA ARBUTIFOLIA, Red Chokeberry**

A shrub closely related to Apple family and produces masses of miniature apple blossoms in the Spring. This variety produces bright red fruits in abundance which resemble small red apples. Very showy after leaves fall.

**ARONIA MELANOCARPA, Black Chokeberry**

Practically the same flowers as the Red variety. Fruits are jet black and show up nicely when planted with the red as a contrast. Both varieties are much in demand for planting parkways, public grounds, etc., as they survive well under adverse conditions as dust, smoke, and the common abuses which such plantings are subjected to. (native collected stock).

12 to 18 in. Div. ....	4.50	40.00
18 to 24 in. Div. ....	.75	6.00
2 to 3 ft. Br. ....	3.50	30.00
3 to 4 ft. Br. ....	4.50	40.00

All Canadian and other export shipments are given careful inspection by our resident inspectors and certificates are attached to every shipment while stock is being packed.



**SHRUBS AND HEDGE PLANTS**  
Continued

**CALLICARPA PURPUREA AMERICANA, Beautyberry**

An intermediate shrub that produces clusters of purple tinted red fruits in Autumn. Very good in locations that become seasonally dry.

12 to 18 in. S. ....	.75	6.00	50.00
2 to 3 ft. Br. ....	3.50	30.00	
3 to 4 ft. Br. ....	5.00	45.00	

**CALYCANTHUS FLORIDUS, Sweet Shrub**

One of the all time favorites. Dark chocolate colored flowers with spicy odor. Glossy dark green foliage that colors bright gold in the Fall. Does well in shade.

	per 10	per 100	per 1,000
6 to 12 in. S. ....		3.00	25.00
12 to 18 in. S. ....	.60	4.00	35.00
18 to 24 in. Br. ....	2.50	20.00	
2 to 3 ft. Br. ....	3.50	30.00	

**CEANOTHUS AMERICANA, Jersey-tea**

A very attractive low shrub that is suitable for dry locations. Early Summer blooming period fits well into all-season plantings. White miniature snowball flowers are very attractive.

12 to 18 in. Br. ....	3.50	30.00	
18 to 24 in. Br. ....	4.50	40.00	

**CORNUS AMOMUM, Silky Dogwood**

One of the thriftier growing of the Red-Twig Dogwoods. Large blue-black berries are borne in clusters.

6 to 12 in. S. ....	2.00	15.00	
12 to 18 in. S. ....	3.00	25.00	
18 to 24 in. S. ....	4.00	35.00	

**CORNUS STOLONIFERA, Red Ozier Dogwood**

A brighter red variety with stems tinted with green. Masses of roots and stolons make this one desirable for erosion control.

6 to 12 in. C. ....	3.00	25.00	
12 to 18 in. C. ....	4.00	35.00	
18 to 24 in. C. ....	.65	5.00	45.00
12 to 18 in. Br. ....	1.25	10.00	
18 to 24 in. Br. ....	2.00	15.00	
2 to 3 ft. Br. ....	3.00	25.00	
3 to 4 ft. Br. ....	4.50	40.00	

*From South Carolina Spring 1953,*

Trees and plants came in fine condition, Thanks for the generous quantities. (name on request) ....

*From Pennsylvania Spring 1953,*

Plants arrived. Every thing O. K. Check for bal. enclosed thanks. (name on request)

**We are not in the Beetle Zone.**

**SHRUBS AND HEDGE PLANTS**  
Continued

**CYDONIA (CHAENOMELES) JAPONICA, Flowering Quince**

Common variety produced from seeds. Some variation in color of blooms and the usual range is from salmon to light red. Somewhat spreading growth.

	per 10	per 100	per 1,000
6 to 12 in. S. ....		3.50	30.00
12 to 18 in. S. ....		4.50	40.00
12 to 18 in. Br. ....	2.00	15.00	
18 to 24 in. Br. ....	2.50	20.00	

**CYDONIA (CHAENOMELES) JAPONICA RUBRA, Red flowering Quince**

Upright type, nonfruiting strain produced from cuttings. There is no variation either as to color of blooms and habits of growth. Good showy, large red flowers that continue to bloom from the very first sign of Spring until leaves are fully matured. We invite comparison with the best.

3 to 6 in. C. ....	.80	6.00	50.00
6 to 12 in. C. ....	1.00	8.00	70.00
12 to 18 in. C. ....	1.50	12.00	100.00
18 to 24 in. C. ....	2.00	15.00	
12 to 18 in. Br. ....	2.50	20.00	
18 to 24 in. Br. ....	3.50	30.00	
2 to 3 ft. Br. ....	5.00	45.00	

Some heavy specimens to B&B quoted at your request.

**CYTISUS SCOPARIUS, Scotchbroom**

Listed by some as an evergreen because of it's dark green branches and persistent foliage. The dark green stems are showy during the dormant season but the real beauty is when the bright yellow flowers open in Spring. Easily controlled by annual pruning.

12 to 18 in. S. ....	1.00	8.00
18 to 24 in. Br. (puddled) .....	3.50	30.00
2 to 3 ft. Br. (puddled) .....	5.00	45.00

Special attention is given to packing Cytisus.

**DEUTZIA SCABRA,**

Tall, thrifty shrub for quick results at a minimum cost.

**CRENATA ROSEA PLENA, Double Rose Deutzia**

Double Rose Deutzia with purple tinted buds opening to rose flowers.

**PRIDE OF ROCHESTER**

Buds are slightly tinted pink with masses of white flowers.

6 to 12 in. C. ....	2.50	20.00
12 to 18 in. C. ....	3.50	30.00
18 to 24 in. C. ....	.75	6.00
18 to 24 in. Br. ....	1.50	12.00
2 to 3 ft. Br. ....	2.50	20.00
3 to 4 ft. Br. ....	3.50	30.00

If we are able to give you any information as to methods of growing, types of soil most suitable, or any other information that might assist you in your successful endeavors we will be glad to hear from you.

**SHRUBS AND HEDGE PLANTS**  
Continued

**EUONYMUS AMERICANA, Brook Euonymus**

A good variety to fill space in dense shade. Dark green stems, good dark green foliage that colors to bronze in Autumn. Bright red seed pods characteristic to the Euonymus are held into winter. Larger plants make nice specimens. (Native Collected stock)

	per 10	per 100	per 1,000
12 to 18 in. S. ....		4.00	35.00
18 to 24 in. S. ....	.75	6.00	50.00
2 to 3 ft. Br. ....	4.00	35.00	
3 to 4 ft. Br. ....	6.00	50.00	

**FORSYTHIA, Goldenbell**

The reliable harbinger of Spring. No home too small or no estate too large to plant liberally with Forsythias.

**FORTUNEL, Weeping Goldenbell**

Somewhat upright with pendulous branches. One of the hardiest varieties.

**INTERMEDIA SPECTABILIS**

Very erect strong grower with larger flowers. Early flowering variety.

**VIRIDISSIMA, Greenstem Forsythia**

Almost an evergreen in the Southern States. Blooms very early with greenish tinted yellow flowers. Not hardy in sub-zero climate.

6 to 12 in. C. ....		3.00	25.00
12 to 18 in. C. ....		4.00	35.00
18 to 24 in. C. ....	.65	5.00	45.00
12 to 18 in. Br. ....	1.25	10.00	
18 to 24 in. Br. ....	2.00	15.00	
2 to 3 ft. Br. ....	3.00	25.00	

Some lightly branched stock up to 4 ft. can be quoted at competitive prices. Good stock for week-end features.

**HYDRANGEA ARBORESENS, Smooth Hydrangea**

Summer flowering white Hydrangea adapted to shady, moist locations. Very effective when planted in groups or masses.

12 to 18 in. S. ....		4.00	35.00
18 to 24 in. S. ....	.75	6.00	50.00
2 to 3 ft. Br. ....	3.00	25.00	
3 to 4 ft. Br. ....	5.00	45.00	

There are times and conditions when your entire want lists may bring you attractive quotations on stock that we do not catalog. Please put us on your mailing list for both your needs and your surplus.

If you have other stock bought from the McMinnville area we will be glad to cooperate in making up bulk truckloads or carloads with other nurseries.

**We are not in the Beetle Zone.**

**SHRUBS AND HEDGE PLANTS**  
Continued

**HYDRANGEA PANICULATA GRANDIFLORA, Pee-Gee Hydrangea**

One of the most popular of the hardy Hydrangeas. Large flowers in late Summer change from white to pinks as the season advances. Our heavy rooted field grown stock is produced from 8 inch cuttings and should be more satisfactory than small bed grown plants. Standard type or tree Hydrangeas may be produced from our liners if properly pruned.

	per 10	per 100	per 1,000
3 to 6 in. C. ....	.75	6.00	50.00
6 to 12 in. C. ....	1.00	8.00	65.00
12 to 18 in. C. ....	1.50	12.00	
12 to 18 in. Br. ....	2.00	15.00	
18 to 24 in. Br. ....	3.00	25.00	
2 to 3 ft. Br. ....	4.00	35.00	
3 to 4 ft. Br. ....	6.00		

**HYDRANGEA QUERCIFOLIA, Oakleaf Hydrangea**

Probably in the "top ten" of the most wanted items in the nursery trade. Because of uncertainty as to supply we have been reluctant to offer even native collected stock. By advance arrangement we are now assured of a reasonable quantity of the best available (native collected stock only). Unusual quantities must be ordered well ahead of shipping date.

6 to 12 in. Div. ....	.65	5.00	45.00
12 to 18 in. Div. ....	1.00	8.00	65.00
18 to 24 in. Br. ....	3.50	30.00	
2 to 3 ft. Br. ....	6.00	50.00	

**HYPERICUM, Goldflower**

One of the most versatile of the native families of woody plants. Regardless of the soil or climatic conditions you will find a variety that will produce satisfactory results. We have selected varieties to represent different types to offer you that will break the monotony in your plantings. (Native collected stock)

**HYPERICUM ADPRESSUM, Creeping Goldflower**

A bright green cushion of foliage tipped with single yellow roses. Blooms freely in summer heat, height to 12 inches with a spread of 18 inches. Rather difficult to transplant but certainly a most interesting variety with possibilities.

6 to 9 in. Br. ....	2.50	20.00
9 to 12 in. Br. ....	4.00	35.00

May be propagated successfully by layering.

**HYPERICUM AUREUM, One of the hardiest of the Goldflowers**

Found in it's native state in Michigan. Also produces large semi-double flowers just about the same time that the blue-green foliage matures. More adaptable to alkaline soil.

12 to 18 in. S. ....		4.00	35.00
18 to 24 in. S. ....	.75	6.00	45.00
18 to 24 in. Br. ....	2.50	20.00	

**SHRUBS AND HEDGE PLANTS**

Continued

**HYPERICUM PROLIFICUM**

The tallest growing native variety. Does well in sandy, moist soil. Flowers slightly smaller than Aureum but more of them. Can be trained into a perfectly shaped miniature tree to about 5 ft. Also a very hardy variety.

	per 10	per 100	per 1,000
12 to 18 in. S. ....		4.00	35.00
18 to 24 in. S. ....	.75	6.00	50.00
18 to 24 in. Br. ....	2.50	20.00	
2 to 3 ft. Br. ....	4.00	30.00	
3 to 4 ft. Br. (tree form) ....	6.00	50.00	

**HYPERICUM DENSIFLORUM**

Especially desirable as foliage variety for shade or slightly damp soil. Masses of small yellow flowers, partially obscured by very dense foliage. Not considered hardy north of Philadelphia, but can be used as a perennial in colder climates.

12 to 18 in. S. ....	.75	6.00	50.00
18 to 24 in. Br. ....	3.50	30.00	

**ILEX VERTICILLATA, Winterberry**

A very hardy form of the deciduous Holly. Grows into very showy large shrub and holds it's bright red Holly berries well into the Winter. Easier to establish than evergreen types. (Native collected stock).

12 to 18 in. Div. ....	.75	6.00	50.00
2 to 3 ft. Br. ....	5.00	40.00	
3 to 4 ft. Br. ....	7.50	60.00	

**LEUCOTHOE RACEMOSA, Sweetbells**

Very similiar to Cataesbi which has definitely taken it's place in the list of "better plants". This is a deciduous variety that colors nicely to shades of gold and bronze in the Fall with persistent tendencies. Flowers in delicate panicles from late Spring to early Summer. Especially desirable for dense shade. Grows taller than Cataesbi. (Native collected stock)

12 to 18 in. Div. ....	1.00	8.00	65.00
18 to 24 in. Br. ....	4.00	35.00	
2 to 3 ft. Br. ....	6.00	50.00	

**LIGUSTRUM, Privet Hedge**

Last season we shipped to the trade more than half a million Privet. Quite a few of our customers were unable to get grades wanted but accepted "next best". Late quantity orders for the heavier grades were returned by the score. The outlook in this area is just about normal, with varieties more balanced than the last few seasons. This makes it possible to quote you uniform prices on the popular VARIETIES;

**Varieties and prices on following page.**

**SHRUBS AND HEDGE PLANTS**

Continued

**AMURENSE, True Amur River (NORTH)**

The variety most widely used by our customers in northern states and Canada. Nice young stock to give you the appearance so necessary for quick retail sales. 2 yr. stock was cut back at the beginning of the growing season and 1 yr. stock has been sheared at the proper time during this growing seasons growth.

**IBOLIUM, Hardy California type**

We are continually getting reports from this variety as to it's hardiness. Many customers say it is just as hardy with them as Amurense. We take the attitude that "the customer is always right".

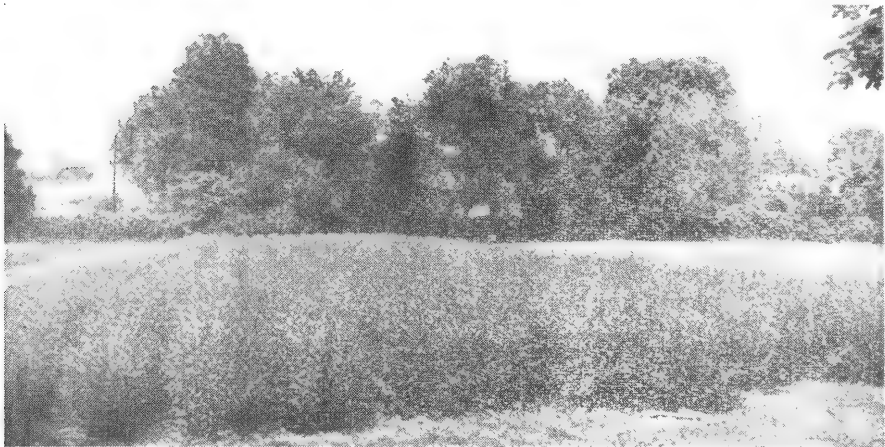
**OVALIFOLIUM, California Privet**

The old reliable hedge Privet with glossy foliage. Becoming more popular in the "deep South" where it is almost an evergreen. Used extensively in shrub plantings in this area.

Grades and prices on the above varieties;

	per 10	per 100	per 1,000
6 to 18 in field grown liners .....		2.50	20.00
18 to 36 in. field grown liners .....		3.00	25.00
10% discount on liners ordered in lots of 10,000 or more.			
6 to 12 in., 2 Br. up .....		3.50	30.00
12 to 18 in., 2 Br. up .....		5.00	45.00
12 to 18 in., 3 Br. up .....		6.00	55.00
18 to 24 in., 2 Br. up .....		6.00	55.00
18 to 24 in., 3 Br. up .....		8.00	70.00
2 to 3 ft., 2 Br. up .....		8.00	70.00
2 to 3 ft., 4 Br. up .....		12.00	

Due to shortage in storage space we will be able to quote attractive row run prices, late Fall delivery, at your request. A good buy for those who are prepared to store and grade this Winter for Spring sales.



Block of our well filled two year Amur River Privet.

**SHRUBS AND HEDGE PLANTS**  
Continued

**LIGUSTRUM OBTUSIFOLIUM, Ibota Privet**

A very hardy spreading type of Privet and used more for masses or specimens than hedges. Foliage very persistent and turns to bronze shades at first frost.

	per 10	per 100	per 1,000
12 to 18 in. 3 Br. up .....	1.00	8.00	
18 to 24 in. 3 Br. up .....	1.25	10.00	
2 to 3 ft. 4 Br. up .....	2.00	15.00	
(The above grades of Ibota Privet are all 2 yr. Transplants)			

**LIGUSTRUM SINENSE, Amur South Privet**

True evergreen type with small dense foliage. All stock offered is well cultivated in field rows and not to be confused with collected material taken from under abandoned hedges. Uniform quality in all grades.

6 to 12 in. S. ....	.50		4.00
12 to 18 in. S. ....	.75		6.00
18 to 24 in. S. ....	1.00		8.00
2 to 3 ft. S. ....	1.50		12.00
18 to 24 in. heavy 2 yr. S. ....	2.50		20.00
2 to 3 ft. heavy 2 yr. S. ....	3.50		30.00
3 to 4 ft. heavy 2 yr. S. ....	5.00		45.00
10% discount on seedlings when ordered in lots of 10,000 or more.			
12 to 18 in Tr. ....	4.00		35.00
18 to 24 in. Tr. ....	6.00		50.00
2 to 3 ft. Tr. ....	8.00		
3 to 4 ft. Tr. ....	12.00		

Seedlings tied in multiples of 50. Transplants tied 25's.

Write for row run quotations on 1 and 2 yr. seedlings if interested.

**LONICERA FRAGRANTISSIMA, Winter Honeysuckle**

Almost an evergreen south of Tennessee and very satisfactory throughout the Mid-West as one of the earliest blooming Honeysuckles. Very pleasantly fragrant.

6 to 12 in. C. ....	.75	6.00	50.00
12 to 18 in. C. ....	1.00	8.00	65.00
12 to 18 in. Br. ....	2.00	15.00	
18 to 24 in. Br. ....	3.00	25.00	

**LONICERA MORROWI, Morrow's spreading Honeysuckle**

Vigorous type with irregular spreading branches. White flowers with red berries. Preferred for conservation plantings and other locations that are sometimes neglected for periods of time. Makes reasonable growth in poor, shady locations.

6 to 12 in. C. ....	3.50		30.00
12 to 18 in. C. ....	4.50		40.00
18 to 24 in. C. ....	.75	6.00	50.00

Lightly branched hedge quality add \$20.00 per thousand to above prices.

12 to 18 in. Br. ....	1.25		10.00
18 to 24 in. Br. ....	2.00		15.00
2 to 3 ft. Br. ....	3.00		25.00

California customers may order Privets, Ilex Opaca, and such stock that requires defoliation to meet your state laws at 25% additional.

**We are not in the Beetle Zone.**

**SHRUBS AND HEDGE PLANTS**  
Continued



Block of our Tatarian Honeysuckle, 20,000 well branched plants.

**LONICERA TATARICA ALBA, White Tatarian Honeysuckle**

This upright type of Honeysuckle has been liberally planted in the colder climates where hardiness has been a factor for many years. It is now becoming a favorite in warmer climates for planting in shady, northern exposures.

**LONICERA TATARICA ROSEA, Pink Tatarian Honeysuckle**

A similiar shrub with masses of pink flowers. Possibly more showy as a flowering shrub with bright pink flowers in early Spring instead of the white. Both are excellent hedge plants either sheared or informal.

	per 10	per 100	per 1,000
6 to 12 in. C. ....		3.50	30.00
12 to 18 in. C. ....	.50	4.50	40.00
18 to 24 in. C. ....	.75	6.00	50.00

Hedge plants, lightly branched, in the above grades at \$20.00 per thousand additional.

12 to 18 in. Br. ....	1.25	10.00
18 to 24 in. Br. ....	2.00	15.00
2 to 3 ft. Br. ....	3.00	25.00
3 to 4 ft. Br. ....	4.00	35.00

Row run stock(1 yr.) will be quoted at your request.

**PHILADELPHUS CORONARIUS, Sweet Mockorange**

Probably the most widely planted Mockorange. Flowers of medium size and with true orange blossom fragrance. Very hardy and produces a nice shrub in a short time.

**PHILADELPHUS GRANDIFLORA, Great flowering Mockorange**

Flowers quite large but scentless. One of the tallest varieties making it a very economical border plant.

6 to 12 in. C. ....		3.50	30.00
12 to 18 in. C. ....		4.50	40.00
18 to 24 in. C. ....	.75	6.00	50.00
12 to 18 in. Br. ....	1.25	10.00	
18 to 24 in. Br. ....	2.00	15.00	
2 to 3 ft. Br. ....	3.00	25.00	



**SHRUBS AND HEDGE PLANTS**  
Continued

**PHYSOCARPOS MONOGYNUS, Dwarf Ninebark**

Very hardy dwarf, self-branching shrub. Especially suitable to low hedges, borders etc., where most shrubs are inclined to overgrow. All plants we offer are field propagated and grown from long cuttings. Exceptionally well rooted in all sizes.

	per 10	per 100	per 1,000
6 to 9 in. C. ....		6.00	50.00
9 to 12 in. C. ....	1.00	8.00	65.00
12 to 18 in. Tr. Br. ....	2.00	15.00	
18 to 24 in. Tr. Br. ....	3.00	25.00	

**RHUS AROMATICA (CANADENSIS), Fragrant Sumac**

Planted extensively under conditions that few shrubs can survive. Gives good results in dry soil with extreme heat such as reflection from stone walls, radiation from sidewalks etc. Early Spring clusters of yellow flowers, followed immediately by red berries. Fall foliage is very brilliant red. (native collected stock)

12 to 18 in. Div. ....	.75	6.00	50.00
18 to 24 in. Br. ....	3.00	25.00	
2 to 3 ft. Br. ....	4.00	35.00	
3 to 4 ft. Br. ....	6.00	50.00	

**RHUS COPALLINA, Flameleaf Sumac**

One of our most colorful native shrubs. Large panicles of green tinted yellow flowers followed by dark red berries, which are relished by such game birds as quail, grouse etc. Foliage turns to brilliant scarlet early Fall to Winter.

12 to 18 in. S. ....		4.00	35.00
18 to 24 in. S. ....	.75	6.00	50.00
2 to 3 ft. Br. ....	4.00	35.00	

**RHUS GLABRA, Smooth Sumac**

Usually classified as a tall shrub but can be easily grown to tree form with well balanced form to 20 ft. Very dense foliage that resembles some of the tropical palms. Good change of color in Fall.

**RHUS TYPHINA, Staghorn Sumac**

Another tall variety with more delicate foliage slightly lacinated. Habits of growth very similar to Glabra.

12 to 18 in. S. ....		4.00	35.00
18 to 24 in. S. ....	.75	6.00	50.00
3 to 4 ft. selected whips .....	1.50	12.00	
4 to 5 ft. selected whips .....	2.50	20.00	

**ROBINIA HISPIDA, Rose Acacia**

Definitely a shrub form of the locust tree that bears large clusters of pink to dark rose flowers but is also in demand as a small tree, growing to 8 ft. in height.

12 to 18 in. Div. ....		4.00	35.00
18 to 24 in. Div. ....	.75	6.00	50.00
3 to 4 ft. tree form .....	6.00	50.00	
4 to 5 ft. tree form .....	8.00		

**SHRUBS AND HEDGE PLANTS**  
Continued

**SPIREA ANTHONY WATERER, A.W. Spirea**

True dwarf Bumalda Spirea that produces bright rose colored flowers throughout the Spring and Summer. Like all shrubs that bloom continually, it must be pruned and fertilized each season to get the best results. Our plantings this season have been increased so that we hope to be able to supply the demand on this very popular item.

	per 10	per 100	per 1,000
3 to 6 in. C. ....	1.00	8.00	65.00
6 to 9 in. C. ....	1.50	12.00	100.00
9 to 12 in. C. ....	2.00	15.00	
12 to 15 in. 3 yr. ....	3.00	25.00	
15 to 18 in. 3 yr. ....	4.00	35.00	
18 to 24 in. 3 yr. ....	6.00	50.00	

All grades listed are nice field grown stock.

**SPIREA CALLOSA ROSEA, Pink Fortune Spirea**

Taller variety with Pink flowers. New foliage also heavily tinted red. Thrives in shade as well as sun. Sales of this variety closely rival Van Houtte with us.

12 to 18 in. S. ....	.50	4.00	35.00
18 to 24 in. S. ....	.75	6.00	50.00
18 to 24 in. Br. ....	2.00	15.00	
2 to 3 ft. Br. ....	3.00	25.00	

**SPIREA PRUNIFOLIA PLENA, True Double flowering Bridal-wreath**

That produces small pure white rosettes in early Spring. double White Spirea that we offer.

12 to 18 in. Div. ....	.75	6.00	50.00
12 to 18 in. Br. ....	2.00	15.00	
18 to 24 in. Br. ....	3.00	25.00	
2 to 3 ft. Br. ....	4.00	35.00	

**SPIREA REEVESIANA, Reeves Spirea**

A good white Spirea and used largely where Van Houtte grows too tall. A good, well filled shrub with dense foliage.

6 to 12 in. C. ....	.75	6.00	
12 to 18 in. C. ....	1.00	8.00	
12 to 18 in. Br. ....	2.00	15.00	
18 to 24 in. Br. ....	3.00	25.00	

**SPIREA VANHOUTTEI, Van Houtte Spirea**

The standard white flowering Spirea well known to the trade. Due to the fact that we carried over some nice blocks of this item we are much better prepared to fill your orders than last season on branched stock. Present outlook is for some top quality liners and hedge grades also.

6 to 12 in. C. ....	.60	4.50	40.00
12 to 18 in. C. ....	.75	6.00	50.00
12 to 18 in. Hedge ....	1.00	8.00	65.00
18 to 24 in. Hedge ....	1.50	12.00	
2 to 3 ft. Hedge ....	1.25	10.00	
12 to 18 in. Br. ....	2.00	15.00	
18 to 24 in. Br. ....	2.50	20.00	
2 to 3 ft. Br. ....	3.50	30.00	
3 to 4 ft. Br. ....			

We can quote you on 1 yr. stock row run for late Fall shipment. Write promptly for quantities needed.

**SHRUBS AND HEDGE PLANTS**  
Continued

**STEWARTIA PENTAGYNA, Mountain Stewartia**

A native shrub of unusual beauty. Flowers freely in June producing large single flowers as much as 3 inches across. The light green foliage turns to golden shades in early Fall. Grows to height of 12 ft. and may be trimmed to tree form. A subject rarely offered to the trade. (Native collected stock)

	per 10	per 100	per 1,000
3 to 4 ft. Br. ....	6.00	50.00	
4 to 5 ft. Br. ....	9.00		

B&B plants for 50 cents additional per plant. Trucks or carlots only.

**SYMPHORICARPOS ALBA, Snowberry (white)**

6 to 12 in. C. ....		4.00	35.00
12 to 18 in. C. ....	.75	6.00	
18 to 24 in. Br. ....	2.50	20.00	

An intermediate shrub that will grow in dense shade. Flowers not so showy but masses of large opaque white berries carried well into Winter give the appearance of small snowballs.

**SYMPHORICARPOS ORBICULATUS, Coralberry**

Also thrives in shade as well as sun. Makes masses of roots, binding the soil on steep hillsides to prevent erosion. Berries are red.

6 to 12 in. C. ....		3.00	25.00
12 to 18 in. C. ....		4.00	35.00
18 to 24 in. C. ....	.75	6.00	
18 to 24 in. Br. ....	1.25	10.00	
2 to 3 ft. Br. ....	2.00	15.00	

**SYRINGA PERSICA, Persian Lilac**

The strain of Lilac that we offer is possibly a hybrid, since it has some characteristics not seen in the Persian Liliacs usually offered.

Canes are stronger, foliage is heavier, and the blooms are a good "lilac purple" that does not fade. It is also an intermittent bloomer with often a nice crop when frost comes. 1 year plants often bloom in the Fall. Own roots only as it produces nicely from cuttings.

3 to 6 in. C. ....	1.00	8.00	65.00
6 to 12 in. C. ....	1.25	10.00	80.00
12 to 18 in. C. ....	1.50	12.00	
18 to 24 in. C. ....	2.00	15.00	
12 to 18 in. Br. ....	2.50	20.00	
18 to 24 in. Br. ....	3.00	25.00	
2 to 3 ft. Br. ....	4.00	35.00	

**SYRINGA VULGARIS, Common Purple Lilac**

Produced from cuttings taken from proven blooming parent plants. We do not grow any seedlings so you will be sure to get blooms. Could be some variations in color as we get cuttings from different strains. Own root plants.

6 to 12 in. Div. ....	.75	6.00	50.00
12 to 18 in. Div. ....	1.00	8.00	65.00
12 to 18 in. 2 yr. Tr. ....	2.00	15.00	
18 to 24 in. 2 yr. Tr. ....	3.00	25.00	
2 to 3 ft. 2 yr. Tr. ....	4.00	35.00	

2 yr. White lilacs in same grades as Purple at 5 cents per plant additional.

**SHRUBS AND HEDGE PLANTS**  
Concluded

**VITEX AGNUS-CASTUS, Lilac Chastetree**

A rather tall shrub that develops quickly. Bright sage-green foliage, deeply serrated. Delicate lilac flowers from Summer to late Fall.

	per 10	per 100	per 1,000
6 to 12 in. S. ....		4.00	35.00
12 to 18 in. S. ....	.75	6.00	
18 to 24 in. S. ....	1.00	8.00	

**WEIGELA HENDERSONI**

Intermediate Weigelia produces crimson buds with dark rose colored flowers. Good substitute for red or crimson.

**WEIGELA ROSEA**

The standard pink variety, considered the most hardy. Very thrifty grower with large ovate leaves. Flowers vary in shades of pinks, getting lighter as they grow older.

6 to 12 in. C. ....		4.00	35.00
12 to 18 in. C. ....		5.00	45.00
18 to 24 in. C. ....	.75	6.00	
12 to 18 in. Br. ....	1.25	10.00	
18 to 24 in. Br. ....	2.00	15.00	
2 to 3 ft. Br. ....	3.00	25.00	
3 to 4 ft. Br. ....	4.00	35.00	

**WEIGELA EVA RATHKE**

Bright red Weigelia that blooms throughout the Summer. One of the older varieties but still considered as one of the best reds.

6 to 12 in. C. ....	1.25	10.00
12 to 18 in. C. ....	2.00	15.00
18 to 24 in. C. ....	2.50	20.00

**WEIGELA NANA VARIEGATA**

Golden variegated leaves together with pink flowers gives this one outstanding color. The strain we offer is not as tall as some varieties and the golden color is dominant, especially in the early growing and flowering period.

6 to 12 in. C. ....	1.00	8.00
12 to 18 in. C. ....	1.50	12.00

**WEIGELA LUTEA, Yellow flowering Weigelia**

Very compact, intermediate type with glossy bronze tinted leaves and bright yellow flowers. Grows nicely in shade and is a good foliage plant.

6 to 12 in. C. ....	.75	6.00
12 to 18 in. C. ....	1.25	10.00
12 to 18 in. Br. ....	2.00	15.00
18 to 24 in. Br. ....	3.00	25.00

**ZANTHORIZA APIFOLIA, Shrub Yellowroot**

Due to many inquiries we are listing this native plant. Very dwarf compared to other shrubs, usually not over 2 ft. Grows well in dense shade and is inclined to colonize if growing conditions are favorable. Flowers in Spring are very dark purple. Excellent ground cover. Native collected stock).

6 to 12 in. Div. ....	1.00	8.00
12 to 18 in. Div. ....	1.50	12.00

# SHADE & ORNAMENTAL TREES & TREE SEEDLINGS

Due to the fact that the past season was most satisfactory to us and to our customers, we will continue to offer practically the same grades.

A few items have been carried to heavier grades by selective digging and such items will be priced accordingly. The demand for good trees seems to have increased rather than slowed down. We regret that we are not in position to grow specimens for you but can do the next best. We offer you variety in smaller sizes that will permit you to grow your own; Selected whips to reduce the growing period; and the branched trees for immediate sales or to grow large trees in the least possible time.

Practically all the trees you order, except smaller liners are dug to your order. Sometimes during the rush season we are unable to get the extra help to dig stock same day your order is received. So, won't you please help us to help you by sending your order in advance of shipping date as far as possible? We want to give you good freshly dug stock when you want it.



Block of McGee's two year Silver Maple Seedlings.

## ACER DASYCARPUM, Silver Maple

Still the favorite "sudden shade". When properly cared for will give a generation of satisfaction. When neglected, it will do as well or better than the most expensive tree. We are offering you exceptionally nice stock in all grades.

	per 10	per 100	per 1,000
6 to 12 in. S .....		1.25	10.00
12 to 18 in. S. ....		2.00	15.00
18 to 24 in. S. ....		2.50	20.00
2 to 3 ft. S. ....		3.50	30.00
3 to 4 ft. selected whips .....	1.00	8.00	
4 to 5 ft. selected whips .....	1.50	12.00	
5 to 6 ft. Br. ....	5.00	45.00	
6 to 8 ft. Br. ....	9.00	75.00	
8 to 10 ft. Br. ....	12.00		

**SHADE AND ORNAMENTAL TREES**  
Continued

**ACER RUBRUM, Red Maple**

This hard Maple has recently become one of the most popular trees. The showy crimson seed pods in early Spring; it's brilliant Fall colors, plus strong resistance to storm damage makes a triple treat in anybody's nursery or sales yard.

	per 10	per 100	per 1,000
12 to 18 in. S. ....		3.00	25.00
18 to 24 in. S. ....		4.00	35.00
2 to 3 ft. S. ....	.75	6.00	50.00
3 to 4 ft. selected whips .....	1.50	12.00	
4 to 5 ft. selected whips .....	2.50	20.00	
5 to 6 ft. Br. ....	6.00	50.00	
6 to 8 ft. Br. ....	11.00	90.00	
8 to 10 ft. Br. ....	15.00		

**ALBIZZIA JULBRISSIN, Mimosa or Silk tree**

Small ornamental tree widely planted throughout the South. Grows to blooming size in a short time and masses of pink flowers are borne through early summer. A good flowering tree for almost any soil condition.

6 to 12 in. S. ....		2.50	20.00
12 to 18 in. S. ....		3.50	30.00
18 to 24 in. S. ....	.60	4.50	40.00
2 to 3 ft. selected whips .....	1.50	12.00	
3 to 4 ft. selected whips .....	2.50	20.00	
4 to 5 ft. selected whips .....	4.00	35.00	

**ASIMINA TRILOBA, Papaw**

Often referred to as "American Banana" because of it's pungent edible fruits. Chocolate colored flowers in early Spring are attractive. Will grow in dense shade. (Native Collected Stock).

12 to 18 in. S. ....	.75	6.00	
18 to 24 in. S. ....	1.00	8.00	
2 to 3 ft. Br. ....	3.00	25.00	
3 to 4 ft. Br. ....	4.00	35.00	

**BETULA NIGRA, River Birch**

This variety of Birch will grow equally as well in the South as in the colder climates. Trunks show the ragged outer bark with lighter inner bark in contrast at an early age. Our branched trees are already coloring nicely and make nice displays on your sales yards.

12 to 18 in. S. ....		3.00	25.00
18 to 24 in. S. ....		4.00	35.00
2 to 3 ft. S. ....	.75	6.00	50.00
3 to 4 ft. selected whips .....	1.50	12.00	
4 to 5 ft. selected whips .....	2.50	20.00	
6 to 8 ft. Br. ....	9.00	75.00	
8 to 10 ft. Br. ....	12.00		

Multiple stem Birch quoted to your specifications. Write us.

**CARPINUS CAROLINIANA, Hornbeam**

Sometimes called Blue Beech because of the resemblance of the bark and leaves to the true Beech. The increased demand for trees that do not grow tall should bring this one into prominence. Can even be sheared into tall hedges with good effect.

12 to 18 in. S. ....		4.00	35.00
18 to 24 in. S. ....		6.00	50.00
4 to 5 ft. Br. ....	.75	6.00	50.00
5 to 6 ft. Br. ....	4.00	35.00	
	6.00	50.00	

**SHADE AND ORNAMENTAL TREES**  
Continued

**CERCIS CANADENSIS, Redbud**

Among the top favorite ornamental trees. Your orders are solicited on a basis of quality stock at the best price possible. We have many satisfied customers on this item and if stock bought from other sources has not been satisfactory, give us a trial.

	per 10	per 100	per 1,000
6 to 12 in. S. ....		2.50	20.00
12 to 18 in. S. ....		3.50	30.00
18 to 24 in. S. ....		4.50	40.00
2 to 3 ft. S. ....	.75	6.00	50.00
2 to 3 ft. Br. ....	2.50	20.00	
3 to 4 ft. Br. ....	4.00	35.00	
4 to 5 ft. Br. ....	6.00	50.00	
5 to 6 ft. Br. ....	9.00	75.00	

Larger specimens quoted to your specific needs. Please write us.

**CORNUS FLORIDA, White Flowering Dogwood**

Our most sincere apologies to you who ordered this item late last season. The supply just did not hold out. Again we have some more nice trees to offer in all sizes but can only promise you quality and not quantity.

6 to 12 in. S. ....	.75	3.50	30.00
12 to 18 in. S. ....		6.00	50.00
18 to 24 in. S. ....	1.25	10.00	
Selected grafting size at same price as 18 to 24 in. S.			
18 to 24 in. Br. ....	3.50	30.00	
2 to 3 ft. Br. ....	6.00	50.00	
3 to 4 ft. Br. ....	9.00	75.00	
4 to 5 ft. Br. ....	15.00	125.00	
5 to 6 ft. Br. ....	22.50		

B&B trees quoted to your specifications. Also collected stock if you are interested. Please write us.

**CORNUS FLORIDA RUBRA, Pink Flowering Dogwood**

A more favorable growing season this year should produce slightly better grades on this item but the quantity will be far short of the demand. We will do the best we can for you. All sizes offered are lightly branched.

12 to 18 in. Br. ....	10.00	80.00	
18 to 24 in. Br. ....	15.00	125.00	
2 to 3 ft. Br. ....	20.00	175.00	
3 to 4 ft. Br. ....	25.00		

Add 50 cents per tree for B&B service. Loaded on trucks or carlots.

**CRATAEGUS CRUS-GALLI, Cockspur Thorn**

A good hardy variety of the Hawthorne. Excellent for hedges. Grows into nice specimens. (Native collected stock).

2 to 3 ft. Br. ....	4.00	35.00	
3 to 4 ft. Br. ....	8.00	65.00	
4 to 5 ft. Br. ....	12.00		

B&B stock at 50 cents per tree additional. Loaded on trucks or carlots.

**We are not in the Beetle Zone.**

**SHADE AND ORNAMENTAL TREES**  
Continued

**FRAXINUS AMERICANA, White Ash**

This variety is more suitable to dry locations.

**FRAXINUS LANCEOLATA, Green Ash**

Widely planted as street trees, parkways, roadsides etc., where a durable tree is needed in a minimum of time. Seedlings often used in wet soils to reforest. Timber ranks top for making baseball bats.

	per 10	per 100	per 1,000
12 to 18 in. S. ....		2.50	20.00
18 to 24 in. S. ....		3.50	30.00
3 to 4 ft. selected whips .....	1.00	8.00	
4 to 5 ft. selected whips .....	1.50	12.00	
5 to 6 ft. Br. ....	6.00	50.00	
6 to 8 ft. Br. ....	9.00	75.00	

Larger trees quoted as to size needed. Please write us.

**FAGUS AMERICANA, American Beech**

One of the most stately trees native to America. Ultimate height to 100 ft. attained over a century. Used chiefly as specimens and grow almost to perfection as a pyramidal tree with broad base. Nuts are edible and very flavorful.

6 to 12 in. S. ....	2.50	20.00
12 to 18 in. S. ....	3.50	30.00
Selected grafting size .....	5.00	45.00
(Please specify if wanted for pot grafting or dormant grafting).		
3 to 4 ft. selected whips .....	1.50	12.00
4 to 5 ft. Br. ....	5.00	45.00
5 to 6 ft. Br. ....	8.00	65.00

**JUGLANS CINERA, White Walnut**

Also known as Butternut. Spreading tree that produces nuts of distinctly buttery flavor. Considered the most delicious of the walnuts by many who really appreciate this little known gift from the forests.

12 to 18 in. S. ....	1.00	8.00
18 to 24 in. S. ....	1.50	12.00
2 to 3 ft. S. ....	2.00	15.00

**JUGLANS NIGRA, Black Walnut**

The Appalachian strain of Black Walnuts are noted for large size nuts, thin shell, and well filled kernels. They bring good prices on our local markets and thousands of pounds are shipped from this area each year. A good investment for your retail customers and should bring you a nice profit.

12 to 18 in. S. ....	5.00	45.00
18 to 24 in. S. ....	1.00	8.00
2 to 3 ft. S. ....	1.50	12.00

**JUGLANS SIEBOLDIANA, Japanese Walnut**

Produces large crops of comparatively thin shelled walnuts of the English Walnut type. Trees bear at an early age, growing to about 20 ft. in this climate.

6 to 12 in. S. ....	1.25	10.00
12 to 18 in. S. ....	2.00	15.00
18 to 24 in. S. ....	2.50	20.00



**SHADE AND ORNAMENTAL TREES**

Continued

**LIQUIDAMBER STYRACIFLUA, Sweet Gum**

Planted from coast to coast and considered one of the most colorful trees in Autumn. Star shaped leaves turn to bright crimson. So compact that the entire tree is a pyramid of flame.

	per 10	per 100	per 1,000
12 to 18 in. S. ....		4.00	35.00
18 to 24 in. S. ....	.75	6.00	50.00
2 to 3 ft. selected whips .....	2.00	12.00	
3 to 4 ft. Br. ....	4.00	35.00	
4 to 5 ft. Br. ....	6.50	50.00	
5 to 6 ft. Br. ....	9.00	75.00	
6 to 8 ft. Br. ....	12.00		

**LIRIODENDRON TULIPIFERA, Tuliptree**

Quick growing tree that is used both as an ornamental and timber. The yellow and orange tulip-like flowers against dense glossy foliage is very showy. Plantings for timber have begun to pay off as quickly as pines. We feel that the trees we offer are as good as can be found in this area.

6 to 12 in. S. ....		1.50	12.00
12 to 18 in. S. ....		2.50	20.00
18 to 24 in. S. ....		3.50	30.00
2 to 3 ft S. ....	.65	5.00	45.00
3 to 4 ft. selected whips .....	1.00	8.00	
4 to 5 ft selected whips .....	1.50	12.00	
3 to 4 ft. Br. ....	4.00	35.00	
4 to 5 ft. Br. ....	6.00	50.00	
5 to 6 ft. Br. ....	9.00	75.00	
6 to 8 ft. Br. ....	12.00		
8 to 10 ft. Br. ....	15.00		

Branched trees are spaced so that we can dig B&B. Be glad to quote you.

**MAGNOLIA ACUMINATA, Cucumbertree and**

**MAGNOLIA TRIPETELA, Greenleaf Magnolia**

Can be supplied in small native collected stock, fair quality. Can be graded specifically for grafting size. Write us as to your needs.

**MORUS RUBRA, Red Mulberry**

Very quickly grows into a producing tree Excellent for poultry yards, bird sanctuaries, or to plant among cherry orchards. Ripens along with the cherries and is more attractive to birds. Results; birds eat mulberries, cherries make pies.

5 to 6 ft. Br. ....	6.50	50.00
6 to 8 ft. Br. ....	9.00	

**MORUS TATARICA, Russian Mulberry**

Hardier variety of Mulberry and more suitable for sub-zero climates. Berries slightly smaller but very prolific. Good understock for weeping mulberries.

12 to 18 in. S. ....		3.00	25.00
18 to 24 in. S. ....		4.00	35.00
2 to 3 ft. S. ....	.65	5.00	45.00
3 to 4 ft. Br. ....	3.00	25.00	
4 to 5 ft. Br. ....	5.00	45.00	

**SHADE AND ORNAMENTAL TREES**

Continued

**OSTRYA VIRGINIANA, Hophornbeam**

Small pyramidal tree with elm-like foliage which colors to a delicate yellow in Fall. Used extensively as a compact formal pyramid and may be sheared at will to keep it at desired height. Normal height about 20 ft. Don't neglect planting small trees. They are sure to take a prominent place in the near future.

	per 10	per 100	per 1,000
12 to 18 in. S. ....		4.00	35.00
18 to 24 in. S. ....	.75	6.00	45.00
4 to 5 ft. Br. ....	6.50	50.00	
5 to 6 ft. Br. ....	9.00		

**OXYDENDRUM ARBOREUM, Sourwood or Sorrel Tree**

Highly rated on practically all planting lists and approved by some of the most prominent authorities because of it's all-season beauty. The clusters of white flowers are conspicuous in the early days of Spring, but the real beauty is the rich crimson foliage in early Fall. May be grown as a low compact specimen or pruned as any small tree. Very easily established in acid or neutral soils. Requires treatment for alkaline soils.

6 to 12 in. S. ....		4.00	35.00
12 to 18 in. S. ....	.65	5.00	45.00
3 to 4 ft. Br. ....	4.00	35.00	
4 to 5 ft. Br. ....	6.50	50.00	
5 to 6 ft. Br. ....	9.00		

Selected heavy specimens B&B will be quoted to your needs. Write us.

**PLATANUS OCCIDENTALIS, American Planetree or Sycamore**

One of the more dependable trees that adapts itself to almost every soil and climate. Immune to practically all insects pests and diseases and requires a minimum of attention such as pruning and spraying. Develops into nice shapely tree.

6 to 12 in. S. ....		3.00	25.00
12 to 18 in. S. ....		4.00	35.00
18 to 24 in. S. ....	.65	5.00	45.00
3 to 4 ft. selected whips .....	1.50	12.00	
4 to 5 ft. selected whips .....	2.50	20.00	
5 to 6 ft. Br. ....	6.50	50.00	
6 to 8 ft. Br. ....	9.00	75.00	
8 to 10 ft. Br. ....	12.00		

Larger trees quoted to your specifications.

**POPULUS NIGRA ITALICA, Lombardy Poplar**

Well known as a necessity for quick results. Screens, backgrounds, borders, accents, and even specimens from the cheapest plantings, to the best. Personally, you may dislike it but you can be sure that somebody is going to sell it.

12 to 18 in. C. ....		2.50	20.00
18 to 24 in. C. ....		3.00	25.00
2 to 3 ft. C. ....		4.00	35.00
3 to 4 ft. C. ....	.75	6.00	50.00
4 to 5 ft. Br. ....	2.50	20.00	
5 to 6 ft. Br. ....	4.00	35.00	
6 to 8 ft. Br. ....	6.00	50.00	
8 to 10 ft. Br. ....	9.00	75.00	

**SHADE AND ORNAMENTAL TREES**  
Continued

**PAWLO니아 IMPERIALIS, Royal Pawlonia**

Grows very quickly into one of the most colorful Spring flowering trees. Produces large masses of royal purple flowers very early, followed closely by leaves more than 12 inches across. Established trees are known to attain a growth of 20 ft. in 1 year.

	per 10	per 100	per 1,000
18 to 24 in. S. ....	1.50	12.00	
4 to 5 ft. selected whips .....	5.00	45.00	
5 to 6 ft. selected whips .....	8.00	65.00	

**POPULUS SIMONI FASTIAGATA, Simon Pyramidal Poplar**

Resembles Lombardy to some extent, slightly broader base that develops more to pyramidal shape than columnar. Light gray bark with quadrangular branches. Leaf stem is red and shows some color throughout the season. Something to break the monotony.

12 to 18 in. C. ....	4.00	
18 to 24 in. C. ....	5.00	
2 to 3 ft. C. ....	.75	6.00
3 to 4 ft. C. ....	1.00	8.00

**PRUNUS SEROTINA, Wild Black Cherry**

One of our showiest ornamental trees that has not been given the publicity it deserves. Literally burdened with long racemes of white flowers in early Spring followed by red fruits that turn to black when ripened. A paradise for the fruit-eating birds. Bears fruit at an early age.

4 to 5 ft. Br. ....	6.00	50.00
5 to 6 ft. Br. ....	9.00	75.00
6 to 8 ft. Br. ....	12.00	

**QUERCUS ALBA, White Oak**

One of the strongest growing oaks with wide spreading lateral branches. One of the giants of the hardwoods. Deeply serrated foliage which gradually turns to bright red in the Fall and is persistent into winter.

4 to 5 ft. whips .....	6.00	50.00
5 to 6 ft. whips .....	9.00	75.00
6 to 8 ft. Br. ....	20.00	150.00
8 to 10 ft. Br. ....	30.00	250.00

Some nice trees to 3 inch caliper in this block can be quoted. Also B&B service if interested.

**QUERCUS NIGRA, Water Oak**

One of the most attractive oaks. Carries both primary and secondary foliage and is almost an evergreen in southern climate. Late Fall frosts produces two distinct colors of foliage in Tennessee climate, bright red blending with yellow. Not considered hardy north of New York City. (Native collected stock).

**QUERCUS PHELLOS, Willow Oak**

Has been recognized as one of the most desirable oaks for many years in some sections. For the past decade it's merits have been recognized, giving it a very prominent spot on the "MUST" list. For best results; plant in your nursery and sell to your visiting customers. (Native collected stock).

**SHADE AND ORNAMENTAL TREES**  
Continued

**QUERCUS RUBRA, Red Oak**

Considered by many to be the choice oak, especially for lawn shade. We consider it one of the most difficult to transplant and do not recommend bare root trees to be planted directly on your landscape projects unless prepared to service them properly through the first year. (Native collected stock)

Above three varieties quoted:

	per 10	per 100	per 1,000
4 to 5 ft. whips .....	5.00	45.00	
5 to 6 ft. whips .....	8.00	65.00	
6 to 8 ft. Br. ....	15.00	125.00	
8 to 10 ft. Br. ....	22.50	200.00	

Larger trees quoted to your specifications. B&B services on all branched grades.

**RHAMNUS CAROLINIANA, Carolina Buckthorn**

Primarily a small tree that grows to about 20 ft. Easily controlled as a tall hedge, or border plant and the dense glossy foliage shows a solid front when properly sheared.

18 to 24 in. S. ....	.75	4.00	35.00
2 to 3 ft. S. ....		6.00	50.00
3 to 4 ft. Br. ....	2.00	15.00	
4 to 5 ft. Br. ....	3.50	30.00	

**ROBINIA PSEUDOACACIA, Black Locust**

A leguminous tree very much in demand for reclaiming eroded and worthless land. Produces excellent fence posts in a minimum of time. As an ornamental it blooms freely with clusters of fragrant white flowers in early Spring. Also used as an understock for grafting Rose Acacia.

6 to 12 in. S. ....	1.25	10.00	
12 to 18 in. S. ....		2.00	15.00
18 to 24 in. S. ....		3.00	25.00
5 to 6 ft. Br. ....	6.00	50.00	
6 to 8 ft. Br. ....	9.00	75.00	

**SALIX BABYLONICA, Weeping Willow**

The true weeping type with slender branches that often reach the ground staking is necessary to grow a straight trunk for well branched trees.

**SALIX ELEGANTISSIMA**

Grows more upright and may be grown into specimens at less expense. Foliage larger and of more compact appearance.

**SALIX NIOBE, Golden Weeping Willow**

Slightly slower in developing but makes masses of roots which penetrate the subsoil to some extent. Excellent for planting on levees, retaining walls, etc., as well as an ornamental. Golden branches are conspicuous all the year.

6 to 12 in. C. ....	3.00	25.00	
12 to 18 in. C. ....		4.00	35.00
18 to 24 in. C. ....		5.00	45.00
2 to 3 ft. C. ....	1.00	8.00	
3 to 4 ft. C. ....	1.50	12.00	

**SHADE AND ORNAMENTAL TREES**  
Continued

**SALIX NIGRA, Common Willow**

Native variety also used to control erosion. Especially good on shady exposures where moisture is excessive. May be controlled as to height by severe pruning. Branches used extensively in making rustic lawn and porch furniture. (Native collected stock).

	per 10	per 100	per 1,000
12 to 18 in. S. ....		3.00	25.00
18 to 24 in. S. ....		4.00	35.00
2 to 3 ft. S. ....		5.00	45.00

**SASSAFRAS VARIIFOLIUM**

One of our showiest native trees, but probably the least known. Flowers freely at an early age with masses of yellow flowers, followed by glossy black berries set in bright red cups. Fall foliage is among the best ranging from orange to scarlet. Dried roots are highly prized by those who know and appreciate "Sassafras Tea."

18 to 24 in. S. ....	.65	5.00
2 to 3 ft. S. ....	1.00	8.00

**ULMUS ALATA, Corked-Bark Elm**

Without doubt, one of the most interesting Elms. Strong slender branches are winged with cork-like bark, grows quickly into a medium height tree that does exceptionally well in dry stony soil, it's hardiness is questionable north of Chicago, but it's value is established in the milder climates.

3 to 4 ft. selected whips .....	1.50	12.00
4 to 5 ft. Br. ....	5.00	45.00
5 to 6 ft. Br. ....	7.50	60.00
6 to 8 ft. Br. ....	12.00	

**ULMUS AMERICANA, American Elm**

Considered one of the standard trees and will continue to be planted.

3 to 4 ft. selected whips .....	1.50	12.00
4 to 5 ft. selected whips .....	2.50	20.00
5 to 6 ft. Br. ....	7.50	60.00
6 to 8 ft. Br. ....	9.00	75.00
8 to 10 ft. Br. ....	12.00	

Larger sizes quoted as to size and quality.

**ULMUS PUMILA, Chinese Elm**

Has become a standard quick-growing shade tree. Also used extensively for large hedges and screens. Has it's faults but will undoubtedly continue to be in demand.

6 to 12 in. S. ....	1.25	10.00
12 to 18 in. S. ....	2.00	15.00
18 to 24 in. S. ....	3.00	25.00
2 to 3 ft. S. ....	4.00	35.00
3 to 4 ft. selected whips .....	1.50	12.00
4 to 5 ft. selected whips .....	2.50	20.00

We are not in the Beetle Zone.

# CLIMBING VINES AND GROUND COVERS

Each year has shown an increasing demand for vines and very few landscape jobs can be completed properly without them. Roadside plantings, parkways, and large private projects that were not planted during the war because of material shortage have been delayed until they have become a necessity. Newer jobs are developing each year. The net profit on this class of material is very good and will run into quite a volume. Why not go out and get your part of this class of business?

We are especially interested in your orders for Hall's Honeysuckle and Vinca Minor in quantity lots. Our supply is good and we can grow for you for delivery in Fall of '54 at a saving. Write us as to your present or future needs.

## CAMPSIS CAPREOLATA, Crossvine

Very hardy evergreen vine that bears clusters of yellow and orange trumpet shaped flowers against a glossy green background.

	per 10	per 100	per 1,000
3 to 6 in. 1 yr. ....	.75	6.00	50.00
12 to 24 in. 3 yr. ....	4.00	35.00	

## CAMPSIS RADICANS, Trumpetvine

Very vigorous vine with bright flame trumpet shaped flowers. These flowers are often 4 to 5 inches long and are followed by large seed pods used extensively by florists to make up many novelties. These vines can be staked and pruned to tree form, making a very showy weeping miniature tree.

6 to 12 in. 1 yr. ....		4.00	35.00
12 to 18 in. 2 yr. ....	1.00	8.00	
18 to 24 in. 3 yr. heavy .....	3.00	25.00	

## CELASTRUS SCANDENS, Bittersweet

This vine is vigorous with bright green foliage but it's chief ornamental value is the showy seed pods. Outer pod is yellow and when opened, shows red seeds which persist through the winter. Relished by quail and grouse and supplies both cover and food. All plants offered are from proven berry bearing parent stock. Common seedlings are often sterile.

6 to 12 in. 1 yr. C. ....		4.00	35.00
12 to 18 in. 1 yr. C. ....	.75	6.00	50.00
12 to 18 in. 2 yr. Br. ....	1.25	10.00	
18 to 24 in. 2 yr. Br. ....	2.00	15.00	
2 to 3 ft. 3 yr. Br. heavy .....	3.50	30.00	

## CLEMATIS VIRGINIANA, White Clematis

1 yr. S. strong liners .....	.75	6.00	50.00
2 yr. S. heavier .....	1.50	12.00	
2 yr. Tr. Heavy Br. ....	4.00	35.00	

A vine that produces a dense background of dark green foliage with snowy white flowers in summer. Clusters of seed pods in late Fall are also ornamental. Perennial in colder climates, but still a good vine.

**CLIMBING VINES & GROUND COVERS**  
Continued



Block of our Hall's Honeysuckles two year plants showing nice growth May 1, 1953.

**LONICERA JAPONICA HALLIANA, Hall's Jap. Honeysuckle**

One of our feature items that continues as a favorite for practical conservation plantings as well as ornamental. Easily established and cheap in first cost makes it very profitable to landscape contractors, retail nurseries etc. We assure you that the quality we offer is as good as the best in any grade you may select.

	per 10	per 100	per 1,000
Medium liners 6 to 12 in. ....		1.25	10.00
Heavier liners 12 to 18 in. ....		2.00	15.00
Transplanted liners .....		4.00	35.00
2 yr. No. 2 field transplants .....	.75	6.00	50.00
2 yr. No. 1 field transplants .....	1.25	10.00	80.00
3 yr. No. 1 field transplants .....	2.00	15.00	120.00

10% discount from these prices for lots of 10,000 or more loaded bulk on Railway freight cars or trucks. Also prepared to quote you on a row run basis on transplanted stock. Write us early for reservations as our contracts for Fall are already rather heavy. Will grow on a liberal contract basis your needs for Fall 54.

**LONICERA CHINENSIS JAPONICA, Chinese Honeysuckle**

A variety similar in growth to Hall's. Leaves are bronze and flowers are rose red. Blooms throughout the Summer and usually carry right up to frost a nice lot of very fragrant flowers.

Strong liners 12 to 18 in. ....	.50	4.00
2 yr. No. 1 field transplants .....	2.00	15.00
3 yr. No. 1 field transplants .....	4.00	35.00

**LONICERA SEMPERVIRENS, Scarlet Trumpet Honeysuckle**

Another colorful variety that produces coral red flowers. Plump seed pods on this variety are red also, More easily controlled than Hall's.

Medium liners .....	.75	6.00	50.00
2 yr. heavier .....	1.50	12.00	
3 yr. Transplants .....	4.00	35.00	

**CLIMBING VINES & GROUND COVERS**  
**Concluded**

**VINCA MINOR, Hardy Myrtle, or Periwinkle**

"The perfect ground cover". Evergreen, dark, glossy foliage that grows in dense shade, or partial shade in almost any type of soil. Even areas that will not sustain grass of any type are planted successfully. Steep banks, gulleys etc., that seem hopeless may be covered completely. Early Spring brings added beauty of blue flowers. Other uses include indoor gardens, window boxes, low boundary definitions, rock gardens etc. In fact there seems to be no limit to it's usefulness.

	per 10	per 100	per 1,000
Medium rooted cuttings .....		1.00	8.00
Medium crowns 2 to 5 leads .....		3.00	25.00
Heavy crowns 5 to 10 leads .....	.75	5.00	45.00
Made up clumps 15 to 30 leads .....	1.00	8.00	60.00
2 Yr. field grown Transplants .....	2.00	20.00	

Will consider contract for potted plants for late Spring 54 delivery. What are your needs on this item? We can do it if it can be done.

**WISTERIA SINENSE, Chinese Blue Wisteria**

Very popular woody vine which grows to immense proportions when not controlled. Long clusters of lilac colored flowers are noted both for beauty and fragrance and make their appearance before leaves are matured. Seedling plants will vary as to size of blooms etc., but grafted stock is from an excellent long-cluster strain.

4 to 8 in. 1 yr. S. ....	.75	6.00	
12 to 18 in. 2 yr. S. ....	1.50	12.00	
2 to 3 ft. 3 yr. blooming size grafts ...	12.00		
Selected understocks for grafting on		10.00	

**VITIS AESTIVALIS, Summer Grape**

Planted chiefly for it's peculiar intense fragrance when in bloom, although fruits are edible and may be used in many ways.

6 to 12 in. S. ....	.75	4.00	35.00
12 to 18 in. S. ....	.75	6.00	50.00
18 to 24 in. Br. ....	3.00	25.00	

# EVERGREENS BROADLEAF & CONIFERS

Due to the fact that we give our attention more especially to open field propagation and growing we do not offer an extensive line of Evergreens, but we do have some items of interest and this season will add some of the more desirable natives to our list.

Some of these native plants are offered as nursery grown stock and so specified in the grades offered. The collected stock we offer is especially selected and graded to the highest standards possible and our efforts will be to place in your hands nice lively stock that will grow for you, if properly handled. If any shipment is received in unsatisfactory condition, we will expect your immediate complaint. Any reasonable adjustment will be made to settle any reasonable complaint, made within ten days after receipt of stock, but we cannot be responsible for your ultimate success or failure.

**Varieties and prices on following page.**



**EVERGREENS, BROADLEAF & CONIFERS**  
Continued

**ABELIA GRANDIFLORA, Glossy Abelia**

Probably the most extensively used Evergreen, and still has a future. Sales for the past seasons have been limited to the supply. This season has been more successful in open field growing and we are happy to be able to offer you nice young field grown liners. (from 8 inch cuttings) at normal prices. Fall planting is usually very successful and your early orders will be appreciated. Try our stock and see the difference.

	per 10	per 100	per 1,000
3 to 6 in. C. ....		7.00	60.00
6 to 9 in. C. ....		9.00	75.00
9 to 12 in. C. ....	1.50	12.00	100.00
9 to 12 in. Br. ....	2.50	20.00	
12 to 18 in. Br. ....	4.00	35.00	
18 to 24 in. Br. ....	6.00	50.00	
2 to 3 ft. Heavy B&B ....	15.00	125.00	
3 to 4 ft. Heavy B&B ....	20.00	175.00	

**BUXUS SEMPERVIRENS, True Bush Boxwood**

This variety is the standard by which all boxwoods are compared. Rather slow in growth, easily shaped and probably the most hardy.

3 to 6 in. Transplants .....	1.50	12.00	
6 to 9 in. Transplants .....	2.00	15.00	
9 to 12 in. Transplants .....	3.00	25.00	
12 to 15 in. sheared B&B .....	25.00		
15 to 18 in. sheared B&B .....	30.00		
18 to 24 in. sheared B&B .....	40.00		

**ILEX OPACA, American Holly**

Well established as one of the most popular of the Evergreen trees. Production is far short of the demand and this is one item you may depend on to make a good profit. (All seedling grades are native collected stock).

3 to 6 in. S. ....	4.00	35.00	
6 to 9 in. S. ....	.75	6.00	50.00
9 to 12 in. S. ....	1.00	8.00	65.00
12 to 18 in. S. (lightly branched) .....	1.50	12.00	
12 to 18 in. 2 Yr. transplants .....	4.00	35.00	
18 to 24 in. 3 Yr. transplants .....	6.00	50.00	

**JUNIPERUS VIRGINIANA, Eastern Redcedar**

Widely planted for it's own beauty as an evergreen. Also considered an ideal understock for grafting various types of Junipers which do not grow readily from cuttings. (All seedling grades are native collected stock)

6 to 9 in. S. ....	3.00	25.00	
9 to 12 in. S. ....	4.00	35.00	
12 to 18 in. S. ....	.75	6.00	50.00
Selected understocks for grafting .....	1.00	8.00	65.00
9 to 12 in. transplants .....	1.25	10.00	
12 to 18 in. transplants .....	2.00	15.00	
18 to 24 in. transplants .....	2.50	20.00	

Transplants are open field grown in wide rows and well cultivated.

**EVERGREENS, BROADLEAF & CONIFERS**  
Concluded

**PINUS VIRGINIANA, Shrub Pine**

Native to our lower elevations and is especially good for reclaiming eroded fields and poor soil that will not produce some of other varieties. During the last few seasons this variety has become popular as a Christmas tree, permitting thinning of stands at a profit at an early age. One of the best for producing knotty pine paneling and may be cut for timber in less than 20 years. (Native collected stock only)

	per 10	per 100	per 1,000
9 to 12 in. S. ....		3.00	25.00
12 to 18 in. S. ....		4.00	35.00
18 to 24 in. S. ....	.75	6.00	50.00

**KALMIA LATIFOLIA, Mountain Laurel**

A native evergreen with all that can be desired in both foliage and flowers. Must have acid soil or be treated annually to do it's best. Large group plantings with other acid loving trees or shrubs are especially interesting (Native collected stock only)

3 to 6 in. S. ....		3.50	30.00
6 to 9 in. S. ....		4.50	40.00
9 to 12 in. S. ....	.75	6.00	50.00
18 to 24 in. Br. clumps B&B .....	12.50	100.00	
2 to 3 ft. Br. clumps B&B .....	15.00	125.00	
3 to 4 ft. Br. Clumps B&B .....	22.50	175.00	

Practically all B&B clumps are blooming age. Make very attractive sales items. Loaded on bulk car or truck shipments only.

**TSUGA CANADENSIS, Canadian Hemlock**

Will probably be in demand as long as any evergreen grown. Those who go into the market each year for their needs can readily testify as to the value. No better investment seems possible at the present time is the way we see it. (All seedling stock listed is collected).

3 to 6 in. S. ....		3.00	25.00
6 to 9 in. S. ....		4.00	35.00
9 to 12 in. S. ....	.75	6.00	50.00
12 to 18 in. S. ....	1.00	8.00	65.00
6 to 9 in. Tr. from beds .....	2.00	15.00	
9 to 12 in. Tr. from beds .....	2.50	20.00	
9 to 12 in. 2 yr. field Tr. ....	4.00	35.00	
12 to 18 in. 2 yr. field Tr. ....	6.00	50.00	

# MISCELLANEOUS PERENNIALS, FERNS, ETC.

**FERNS. In Varieties: (All native collected stock)**

**ADIANTUM PEDATUM, Maidenhair Fern**

Grows in dense shade, well drained soil. Lacy fronds to about 12 inches. Deciduous but a hardy perennial.

Average plants .....	1.00	8.00	65.00
Heavier selected plants .....	2.00	15.00	

**MISCELLANEOUS PERENNIALS**  
Concluded

**DENNESTEDIA PUNCTILOBA, Hayscent Fern**

Small fern to 9 inches which shows up best in colonies. Complete ground cover under favorable conditions. Thrives in low moist woodlands, but not a bog fern.

	per 10	per 100	per 1,000
Medium Plants .....	1.00	8.00	65.00

**ASPLENIUM PLATYNEURON, Ebony Spleenwort**

Small, erect, evergreen fern with very dark green fronds and black stems. Adapted to very dry soil and will grow under larger pines, red cedars etc., where many small plants do not survive, height to 12 inches.

Average plants .....	1.00	8.00	65.00
----------------------	------	------	-------

**OSMUNDA CINNAMOMAE, Cinnamon Fern**

Tall deciduous fern which produces fronds to 4 ft. tall and well furnished from crown to tip. Very much at home in wet boggy soil. One of the best deciduous ferns if you have favorable location to plant it.

Heavy plants .....	2.00	15.00
Specimens .....	5.00	45.00

**OSMUNDA REGALIS, Royal Fern**

The tallest native with long stems terminated with rather coarse foliage. Grows along with the Cinnamon Fern a good effect can be had with both planted together.

Heavy plants .....	2.00	15.00
Specimens .....	5.00	45.00

**POLYSTICHUM ACROSTCHOIDES, Christmas Fern (Evergreen)**

Possibly the most widely planted of our native Ferns. Hardy into upper Michigan and Wisconsin as an outdoor plant. Could be used more in landscape work.

Medium plants .....	1.00	8.00
Heavy plants .....	2.00	15.00

**HEMEROCALLIS FULVA, Tawny Day Lily**

The Day Lily is very popular in all sections of the country and is being planted in its many named varieties. While it is being given the publicity would be the proper time to feature this item in your bargain list, or even a well planned magazine ad. Glad to hear from some interested party on this as we are prepared to supply quantities at a very reasonable price.

Average Bulbs .....	3.00	25.00
---------------------	------	-------

**IRIS CRISTATA, Crested Iris**

A miniature Iris of perfect proportions and color. Flowers in early Spring are borne on 6 inch stems and their sky-blue color is dominant with shades of yellow and purple markings. Colonizes rapidly and makes a dense ground cover all summer.

Average size Bulbs .....	.75	6.00	50.00
--------------------------	-----	------	-------

# INDEX

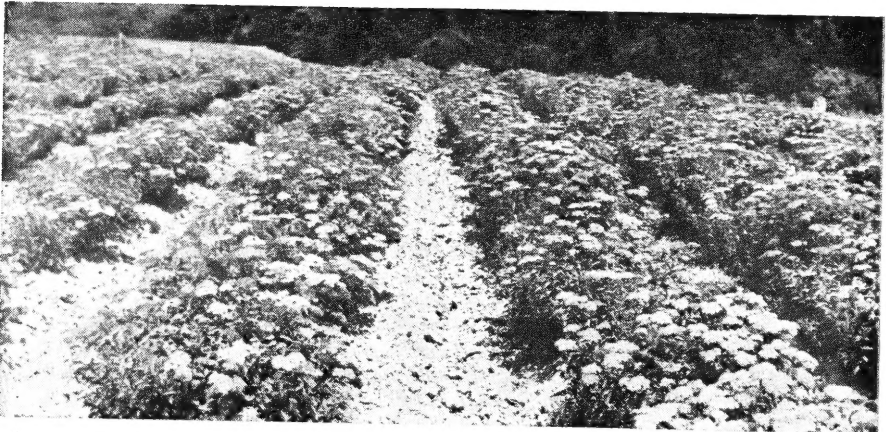
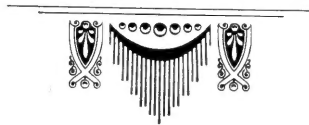
SHRUBS & HEDGE PLANTS.....2-15

SHADE & ORNAMENTAL TREES.....16-24

VINES GROUND COVERS.....25-27

EVERGREENS .....27-29

MISCELLANEOUS .....29-30



Block of McGee's Spirea, Anthony Waterer Growing at the foothills of the beautiful Cumberland Mountains.



**LOWELL H. McGEE**  
**NURSERIES**  
**McMINNVILLE**  
**TENNESSEE**



MESSAGE PRESS, COALMONT, TENNESSEE